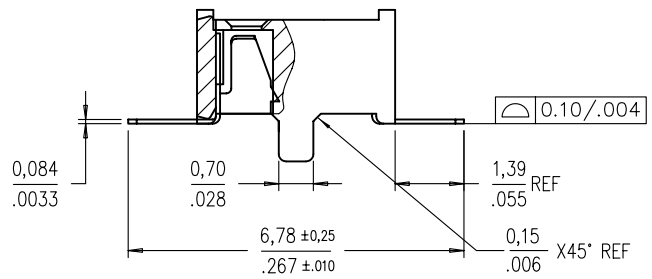
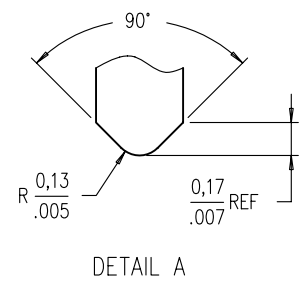
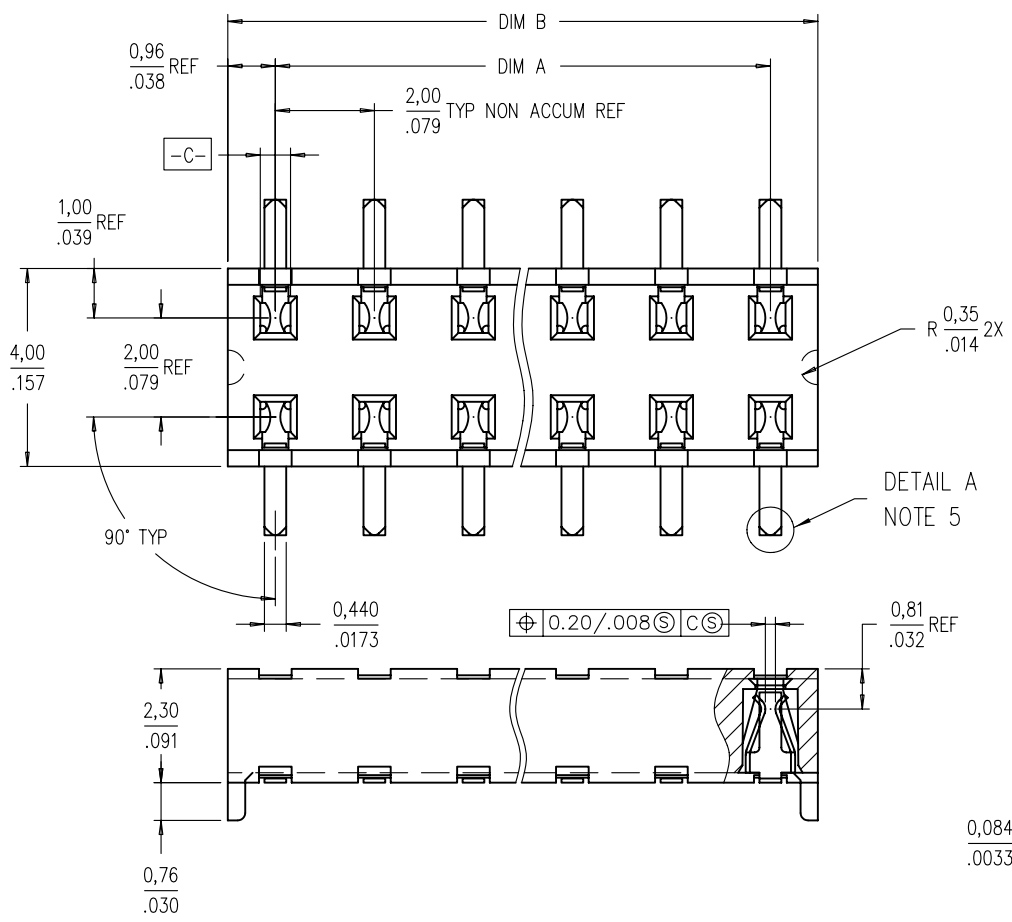


Tous droits strictement réservés. Reproduction ou communication a des tiers interdite sous quelque forme que ce soit sans autorisation écrite du propriétaire. Propriété de c FCI. Droits de reproduction FCI.

All rights strictly reserved. Reproduction or issue to third parties in any form whatever is not permitted without written authority from the proprietor. Property of FCI. Copyright FCI.



CONFIDENTIAL

mat'l. code				tolerances unless otherwise specified		CUSTOMER COPY	FCI www.fciconnect.com	
ltr	ecn no	dr	date	linear	X.X±0.3/.XX±.01		projection MM/INCH	title LOW PROFILE VCC SMT 2.3 TOP ENTRY ASSY WITH 0.76/.030 LOCATING FEATURES
N	S40314	BSL	12/20/94	linear	X.XX±0.13/.XXX±.005	scale A		product family LPVCC code -
P	S80115	BSL	5/14/98	angles	X.XXX±0.051/.XXX±.0020		size dwg no 92090 sheet 1 of 2	
R	V94400	BSL	12/1/99	angles	ANGLES ±2°			
S	S05-0025	KBM	2/17/05	dr	BS LOW 1/6/00			
				engr	BS LOW 1/6/00			
				chr	KB MAH 2/17/05			
				appd	JOEY NG 2/17/05			
sheet index	revision sheet	S	S					
		1	2					

cage code 22526

ACAD

PDM: Rev:S

STATUS: Released

Printed: Feb 01, 2007

Tous droits strictement réservés. Reproduction ou communication a des tiers interdite sous quelque forme que ce soit sans autorisation écrite du propriétaire. Propriété de c FCI. Droits de reproduction FCI.

All rights strictly reserved. Reproduction or issue to third parties in any form whatever is not permitted without written authority from the proprietor. Property of FCI. Copyright FCI.



PRODUCT NO	POSITIONS	DIM. A	DIM. B
92090-X04	2 X 2	2,00/,079	3,92/,154
-X06	2 X 3	4,00/,158	5,92/,233
-X08	2 X 4	6,00/,236	7,92/,312
-X10	2 X 5	8,00/,315	9,92/,391
-X12	2 X 6	10,00/,394	11,92/,469
-X14	2 X 7	12,00/,472	13,92/,548
-X16	2 X 8	14,00/,551	15,92/,627
-X18	2 X 9	16,00/,630	17,92/,706
-X20	2 X 10	18,00/,709	19,92/,784
-X22	2 X 11	20,00/,787	21,92/,863
-X24	2 X 12	22,00/,866	23,92/,942
-X26	2 X 13	24,00/,945	25,92/,1,020
-X28	2 X 14	26,00/,1,024	27,92/,1,099
-X30	2 X 15	28,00/,1,102	29,92/,1,178

PLATING OPTIONS OVER CONTACT AREA
0 = 0,2u/8u" Au
1 = 0,76u/30u" Au
3 = 0,38u/15u" Au

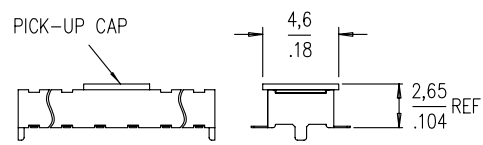
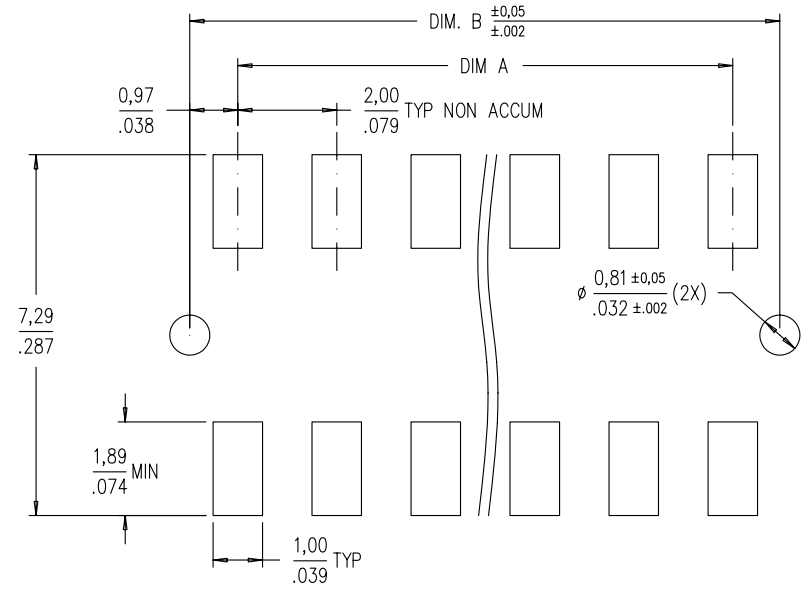


FIG. 1  
NOTE 7 (b) & (d)



RECOMMENDED PAD LAYOUT

NOTES :

- 1 HOUSING MAT'L : HIGH TEMP PLASTIC.
- 2 TERMINAL MAT'L : BeCu.
- 3 TERMINAL RETENTION 0,5 Kg/1,1 Lbs.
- ④ SOLDER TAILS PLATING:  
a) SOLDER TAIL OF P/N: 92090-XXX IS TIN/LEAD PLATED.  
b) SOLDER TAIL OF P/N: 92090-XXXLF IS 100% MATTE TIN PLATED.
- 5 'V' CUT OPTIONAL - MANUFACTURING PROCESS OPTION.
- 6 PRODUCT DESCRIPTION CODE :  
XXXX-X XXLF  
  - LEAD FREE (4b)⑨
  - TOTAL POSITIONS
  - PLATING
  - BASE NUMBER
- 7 PACKAGING :  
  - (a) XXXX-XXX --- STD PACKAGING IN TUBE.
  - (b) XXXX-XXXTR --- TAPE AND REEL (CONDUCTIVE) PACKAGING WITH PICK-UP CAP (SEE FIG 1).
  - (c) XXXX-XXXTRN --- TAPE AND REEL (CONDUCTIVE) PACKAGING WITHOUT PICK-UP CAP.
  - (d) XXXX-XXXCR --- TAPE AND REEL (NON-CONDUCTIVE) PACKAGING WITH PICK-UP CAP (SEE FIG 1).
  - (e) XXXX-XXXCRN --- TAPE AND REEL (NON-CONDUCTIVE) PACKAGING WITHOUT PICK-UP CAP.
- 8 THE HOUSING WILL WITHSTAND EXPOSURE TO 255° C PEAK TEMPERATURE FOR 10 SECONDS IN A CONVECTION, INFRA-RED OR VAPOR PHASE REFLOW OVEN.
- ⑨ THIS PRODUCT MEETS EUROPEAN UNION DIRECTIVES AND OTHER COUNTRY REGULATIONS AS DESCRIBED IN GS-22-008.

CONFIDENTIAL

mat'l. code				tolerances unless otherwise specified		CUSTOMER COPY		FCI www.fciconnect.com	
ltr	ecn no	dr	date	linear	X.X±0.3/.XX±.01	projection	title		
S					X.XX±0.13/.XXX±.005	MM/INCH	LOW PROFILE VCC SMT 2.3 TOP ENTRY ASSY WITH 0.76/.030 LOCATING FEATURES		
				angles	X.XXX±0.051/.XXX±.0020	scale	product family	code	
				dr	ANGLES ±2°	10:1	LPVCC		
				engr			size	dwg no	
				chr			92090		sheet
				appd					2 of 2
sheet index	revision sheet								

cage code 22526

PDM: Rev:S

STATUS: Released

Printed: Feb 01, 2007

ACAD